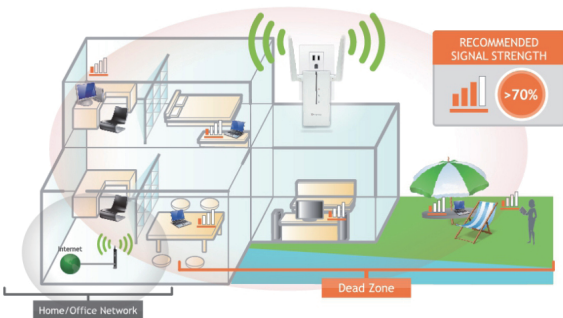
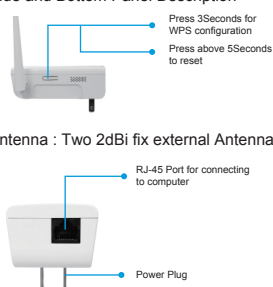


Step1 Normal Power 100mW Compact Wi-Fi Range Extender

Find an optimal setup location between your Wireless Router and your wireless dead zone



Side and Bottom Panel Description



IMPORTANT:



PLACE THE SMART REPEATER IN A LOCATION WHERE IT CAN RECEIVE A STRONG SIGNAL FROM YOUR WIRELESS ROUTER

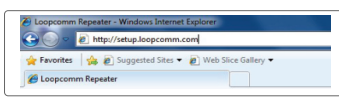
This can be done before or after setup is complete. The Smart Repeater will save your settings.

Step2 Connect your PC or Tablet to the Smart Repeater



- a Connect the Cable RJ-45 to Smart Repeater and to computer or Notebook Port
- b Plug the Smart Repeater to Power Plug

Step3 Open your Web Browser



Enter the setup web address into your browser:
http://setup.loopcomm.com

If the URL fails to open, then try <http://192.168.1.250>

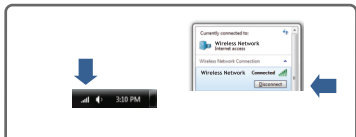
Recommended browsers: Google Chrome, Safari or Internet Explorer (8.0 or up) Do not use Firefox

IF YOU HAVE PROBLEMS ACCESSING THE WEB MENU...

Disconnect your PC from wireless networks, open your browser and try again.

Windows 7 & Vista (example)

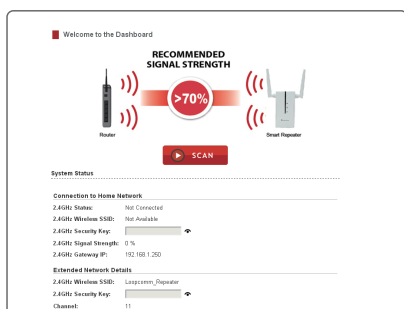
1. Click on the wireless icon to see available wireless networks (For vista, click start> Connect To)
2. Select your current Wireless Network and click **Disconnect**
3. Press WPS button for 5Seconds to restart the Smart Repeater and wait for 60Seconds and try <http://setup.loopcomm.com> again.



! If you are still having trouble accessing the Web Menu, disconnect the cable from your computer to the Smart Repeater. Connect wireless using the SSID: **Loopcomm_Repeater** and Password: **loopcomm** and try again.

Accessing the Smart Setup Wizard does not require Internet access. The menu is served from the Smart Repeater.

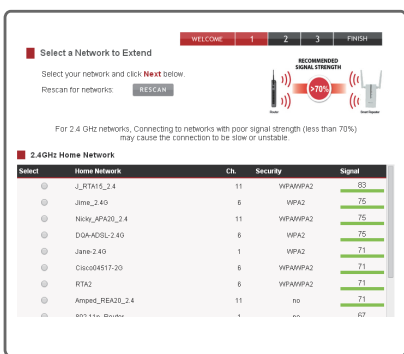
Step4 Welcome to Dashboard



The Dashboard will provide you with the current status of the Smart Repeater.

Click **Scan** to find available networks to extend

Step5 Scan for a wireless Network



Click **Scan** to begin scanning for nearby wireless networks.

Highlight and select the wireless network(s) that you wish to repeat.

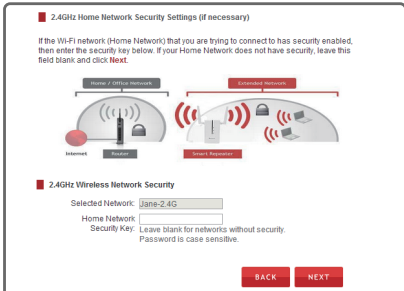
>70% Recommended signal
Select the wireless network with a signal strength greater than 70% for the most reliable connection

Connecting to a weak signal may result in slower speeds or intermittent connectivity.

Click **Next** to Continue.

If you do not see your desired wireless networks, move the Smart Repeater closer to the router and scan again as it may be out of range.

Step6 Home Network Security Settings (If necessary)

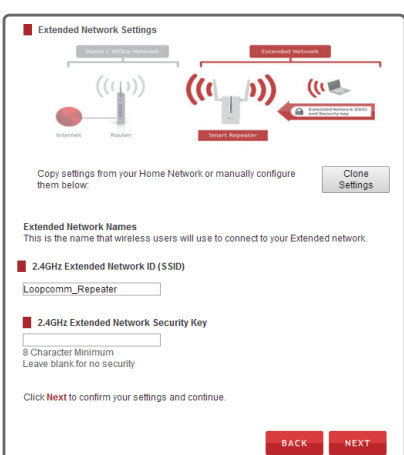


Enter your password and then click **next**.

If your wireless network(s) does not have security enabled, leave the security field blank.

Click **Next** to Continue.

Step7 Configure Settings for your Extended Network



The ID of your extended network is: **Loopcomm_Repeater**

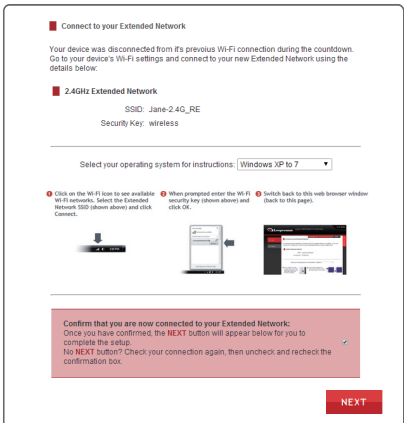
To change it, enter a new name in the SSID Field. Wireless Users connecting to the range extender can use this ID to identify the extended network.

Enter a new key in the security key field. The key must be at least 8 characters long.

Click **Next** to apply your settings. The smart Repeater will reboot. This process may take up to 150seconds. Don't refresh the web page.

The page will automatically reload with the connection status.

Step8 Connect to the New Extended Network



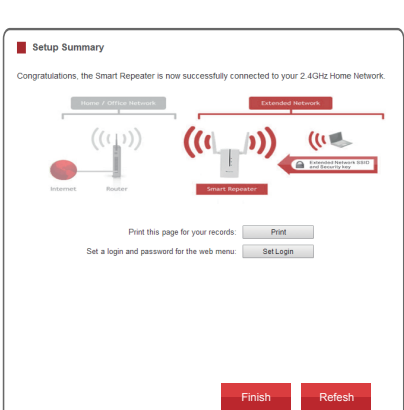
During the countdown process, the Range extender will reboot and disconnect the Wi-Fi connection. At this point, you need to reconnect your PC or tablet to the new extended network. Follow the instruction on the screen to connect to the extended network.

Once you have connected, click the check box to confirm. The **Next** button will appear allowing you to complete the setup process.

If there are problems with your configuration, the setup wizard will inform you to rescan for a network to extend.

If there are no problems, you will see the setup summary page below.

Step9 Setup Summary



Congratulations, the smart repeater is now successfully configured. Your settings are now saved. You may now detach the Ethernet cable from your computer and connect to wireless smart repeater.

If you haven't already positioned your Smart Repeater in an optimal location, you may do so now. All Smart Repeater settings are saved and can be safely powered off for relocation.

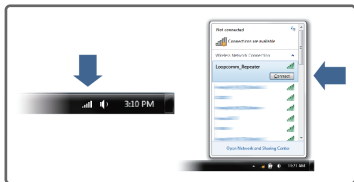
You may also attach any wired network devices to the wired ports on the back of the smart repeater.

Press **Finish** to complete the process. If there is a problem with your configuration, then the smart setup wizard will inform you to restart the wizard and select another network to repeat.

How to Connect your Wireless Computer to the Smart Repeater

Windows 7 and Vista

Click on the wireless icon to see available wireless Networks (For Vista, Click Start > Connect To). Select the "Loopcomm_Repeater" network and click **Connect**.



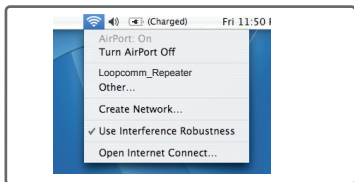
Windows 8

Swipe in from the right edge to access the Charms bar, tap on Settings, Select the WiFi icon and select "Loopcomm_Repeater".



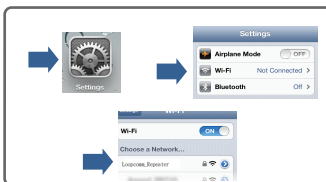
MAC OS X

A. Click on the wireless icon to view available wireless networks. Select the "Loopcomm_Repeater" or network to join that network.



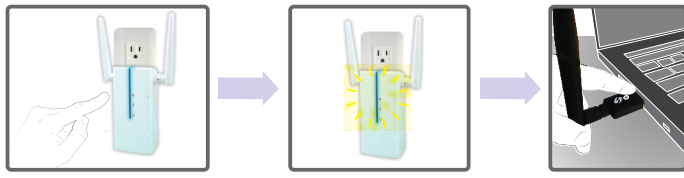
iPhone

Tap on settings icon, select Wi-Fi, and choose the network, "Loopcomm_Repeater".



Wi-Fi Protected Setup (One-Touch Setup or Push Button Configuration)

If your wireless adapter has WPS one touch setup, you can use it when connecting to the Smart Repeater, Hold the WPS button on the smart Repeater (left side) for 3 seconds. The WPS LED will begin to blink. As it blinks push the WPS button on your wireless adapter or enable WPS with the provided software for your wireless adapter.



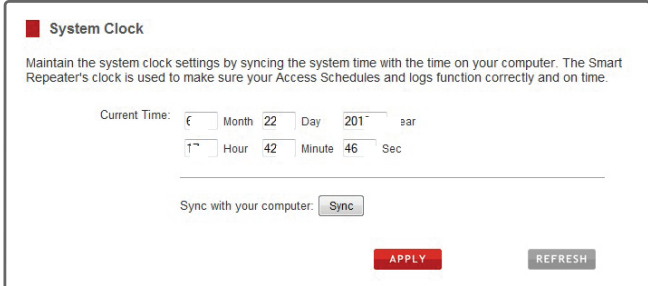
Using the Smart Features on your Smart Repeater

The Smart Repeater is equipped with many powerful security features which can be accessed through the web menu:

<p>Web Menu (Left Side)</p>	<p>Access Scheduling Control when your Wi-Fi is on/off 2.4GHz Wi-Fi settings > Access Schedule</p>
	<p>User Access Control Restrict network access to specific users 2.4GHz Wi-Fi settings > Access Schedule</p>
	<p>Wireless Coverage Control Adjust the distance of your wireless network 2.4GHz Wi-Fi settings > Access Schedule</p>

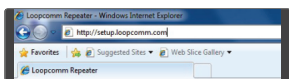
Setting the Range Extender's System Clock

In order to access schedules and perform the logs using the correct time stamps and schedules you need to set your System clock. To do so, Press **Management** and access the System clock, tab to sync the **System Clock** with your computer time.



Tips: Trouble Accessing the smart setup Wizard

PROBLEM: The setup wizard does not appear when you enter the setup web address.



Enter the setup web address into your browser:

http://setup.loopcomm.com

If the URL fails to open, then try <http://192.168.1.250>

Internet Explorer cannot display the webpage

What you can try:

- [Diagnose Connection Problems](#)
- [More information](#)

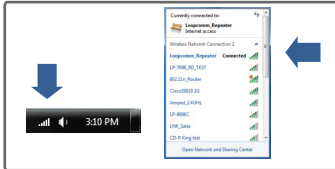
Solution: Disconnect your computer from all Wi-Fi networks and try again

Your computer should be connected to the Dual Band Range Extender with the included Ethernet Cable.

- Disconnect your computer from all wireless networks.
- Enter <http://setup.loopcomm.com> into your web browser again.

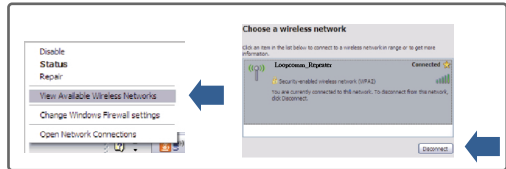
NOTE: your computer does not need internet to access the Smart Setup Wizard.

Windows 7:



Click the wireless signal icon from bottom Right corner. Select your network and click Disconnect.

Windows XP:



Right click the wireless signal icon from bottom right corner. Click view available wireless networks, select your network and click Disconnect.

If you continue to have problems accessing the Smart Setup Wizard:

- Check your power first
- Reboot the smart Repeater. Disconnect your computer from all wireless networks and try again.

Tips: Power Outages, Resetting Routers and Channel Changes

Wireless routers operate on specific wireless channels to avoid interference with neighboring networks. Some wireless routers are set automatically to scan for the best wireless channel. A power outage, or a simple reboot, may cause your home wireless router to change its wireless channel and cause the range extender to disconnect from your home network.

To fix this issue, Simply log onto the smart repeaters web menu by opening your web browser and accessing <http://setup.loopcomm.com>. If the page does not load, try resetting the smart repeater by holding the reset button for 5 to 10seconds. After the Smart Repeater has rebooted open your web browser and try again.

When the web menu appears, run through the smart wizard again to reconfigure the connection to your home network.

To prevent the channel changing issue from occurring in the future, you may log onto your router's web menu and set the wireless channel from automatic to a static channel number. You need to reconfigure the smart repeater with the new channel. If you are not sure how to access your router's web menu, contact the support department for the brand of your wireless router.

Auto loading web menu

When the smart repeater loses its connection with your home network, the web menu will automatically load on your web browser. All web address entries will be redirected to the smart setup wizard of the smart repeater. This redirect feature is through the web menu (left side): [More Settings>2.4G> Network Settings> IP Settings](#)

Trouble Shooting Tips

PROBLEM: I cannot connect to my home network. I received an error when running the smart setup wizard.

SOLUTION: a. Your home network may be secured. Double check that you have the correct security key to connect to the home network.

b. Reboot your home network router and try to connect again using the smart setup wizard.

c. Check that your home network router's DHCP server is enabled. The smart repeater needs to obtain an IP from your home network router.

PROBLEM: My smart repeater was working fine previously, but now I can no longer access the internet through the smart repeater.

SOLUTION: a. The connection to your home network may have been dropped or the router settings may have changed. Changes to the router could be a result of several events, such as power outage. When this occurs, connect to the smart repeater and access the setup menu using the web address: <http://setup.loopcomm.com>

Run the smart setup wizard to reconnect the smart Repeater to your network.

b. The smart repeater may be too far from your home router are not maintaining signal Strength above 70%. Check the signal strength between the router and the smart Repeater through the web menu (left side): more settings>Management>device status.

The signal strength readout will be under the home wireless network settings section.

This signal strength must be above 70%. If it is below, move the smart repeater closer to your router, or reposition the smart repeater.

PROBLEM: I cannot find my home network when scanning for wireless networks in the smart setup wizard.

SOLUTION: a. The smart repeater may be out of range, Move the smart repeater closer towards the wireless router and try the setup wizard again from the web menu.

b. Make sure that your home networks wireless SSID is broadcasted and not hidden.

Hidden SSIDs will require that you manually enter the SSID into the wireless settings >2.4G > home network menu.

Federal Communication Commission Interference Statement

This equipment has been tested and found to comply with the limits for a Class B digital device, pursuant to Part 15 of the FCC Rules. These limits are designed to provide reasonable protection against harmful interference in a residential installation. This equipment generates, uses and can radiate radio frequency energy and, if not installed and used in accordance with the instructions, may cause harmful interference to radio communications. However, there is no guarantee that interference will not occur in a particular installation. If this equipment does cause harmful interference to radio or television reception, which can be determined by turning the equipment off and on, the user is encouraged to try to correct the interference by one of the following measures:

- Reorient or relocate the receiving antenna.
- Increase the separation between the equipment and receiver.
- Connect the equipment into an outlet on a circuit different from that to which the receiver is connected.
- Consult the dealer or an experienced radio/TV technician for help.

FCC Caution:

To assure continued compliance, any changes or modifications not expressly approved by the manufacturer could void the user's authority to operate this equipment. (Example - use only shielded interface cables when connecting to computer or peripheral devices).

FCC Radiation Exposure Statement

This equipment complies with FCC RF radiation exposure limits set forth for an uncontrolled environment. This equipment should be installed and operated with a minimum distance of 20 centimeters between the radiator and your body. This transmitter must not be co-located or operating in conjunction with any other antenna or transmitter.

The antennas used for this transmitter must be installed to provide a separation distance of at least 20 cm from all persons and must not be co-located or operating in conjunction with any other antenna or transmitter.