

## High Power Wireless-300N Compact USB Adapter

**NOTE: Do not insert the USB adapter until the software/driver has been installed.**

### Insert the Setup CD



### Install Software

The menu page should appear.

Select the instruction for your operating system and install the driver for the USB adapter.

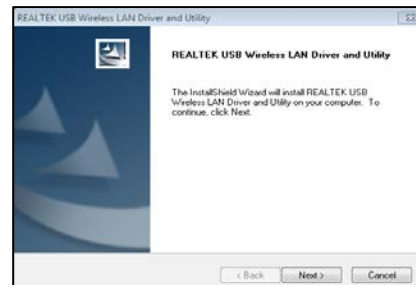
### Follow the Instructions for Driver Installation

#### A. From the Menu page, select **Driver Installation**



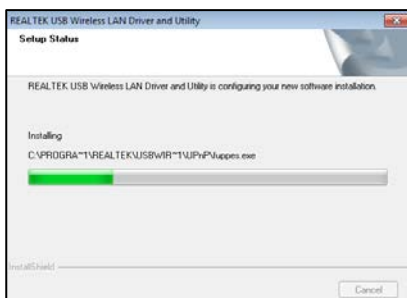
If the Menu page does not appear, browse the CD drive and double-click the **autorun.exe** file

#### B. Start the Driver Installation



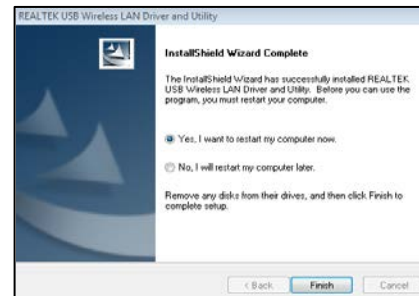
if prompted, click **Next** to begin the installation

#### C. Continue the Driver Installation



Follow the instructions that appear for installation

#### D. Restart your Computer



A prompt will appear asking you to restart your computer. Select **Yes** and click **Finish** to restart.

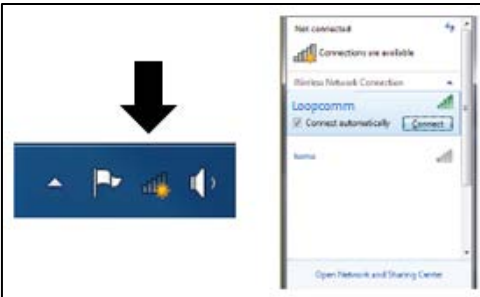
#### E. Insert the High Power USB Adapter



After the computer has fully rebooted, locate a USB port and insert the USB Adapter. Windows should automatically begin to install the driver for using the USB Adapter.

### Windows 7

#### 1. Connect to a Wireless Network



Locate the Wireless Icon in the Windows System tray (bottom right corner) and click it to view available wireless Networks. Highlight your desired network and click **Connect**.

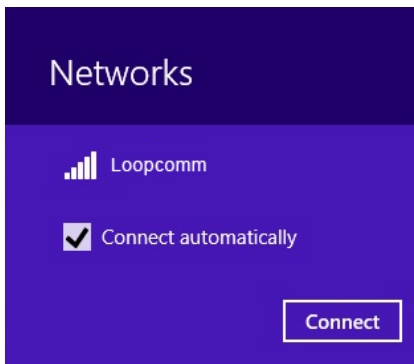
#### 2. Connect to a Wireless Network



If the network you are trying to connect to has security enabled you will need to enter it here.

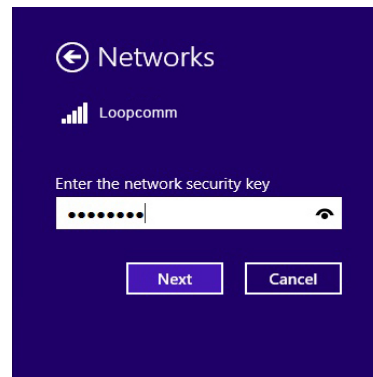
### Windows 8.1

#### 1. Connect to a Wireless Network



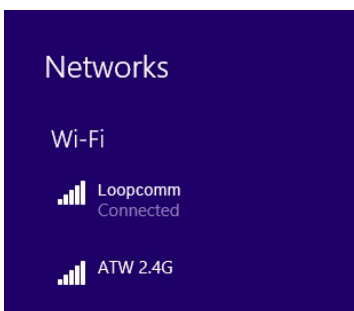
Click it to view available wireless Networks. Select the Wireless Network and tick mark the button to connect automatically & press "Connect".

#### 2. Connect to a Wireless Network



Enter the Security Key then click "Next".

#### 3. The Wi-Fi Network is connected successfully.



### How to Upgrade your Antenna

Upgrading your antenna can provide more range and distance for different types of wireless applications. The Loopcomm High Power USB Adapter is compatible with any High Gain 2.4 GHz Wi-Fi antenna with a RP-SMA connector. Simply unscrew the original antenna and screw on the upgraded antenna for more range and distance. For more information on High Gain antennas visit our Loopcomm website.



### Troubleshooting Tips

**PROBLEM:** I inserted the CD but the Installation Menu does not appear.

**SOLUTION:** Windows: Click Start, click My Computer (or Computer) and double-click your CD-ROM drive. Locate the autorun.exe file and double-click it.

### REGULATORY INFORMATION

#### Federal Communication Commission Interference Statement

This equipment has been tested and found to comply with the limits for a Class B digital device, pursuant to Part 15 of the FCC Rules. These limits are designed to provide reasonable protection against harmful interference in a residential installation. This equipment generates, uses, and can radiate radio frequency energy and, if not installed and used in accordance with the instructions, may cause harmful interference to radio communications. However, there is no guarantee that interference will not occur in a particular installation. If this equipment does cause harmful interference to radio or television reception, which can be determined by turning the equipment off and on, the user is encouraged to try to correct the interference by one or more of the following measures:

- Reorient or relocate the receiving antenna.
- Increase the separation between the equipment and receiver.
- Connect the equipment into an outlet on a circuit different from that to which the receiver is connected.
- Consult the dealer or an experienced radio/TV technician for help.

#### FCC Caution:

This device complies with Part 15 of the FCC Rules. Operation is subject to the following two conditions: (1) This device may not cause harmful interference, and (2) this device must accept any interference received, including interference that may cause undesired operation.

#### RF Radiation Exposure and Hazard Statement:

To ensure compliance with FCC RF exposure requirements, this device must be installed in a location such that the antenna of the device will be greater than 0.5cm away from all persons. Using higher gain antennas and types of antennas not covered under the FCC certification of this product is not allowed. Installers of the radio and end users of the product must adhere to the installation instructions provided in this manual. This transmitter must not be co-located or operating in conjunction with any other antenna or transmitter.

#### Non-modification Statement:

Use only the integral antenna supplied by the manufacturer when operating this device. Unauthorized antennas, modifications, or attachments could damage the TI Navigator access point and violate FCC regulations. Any changes or modifications not expressly approved by the party responsible for compliance could void the user's authority to operate this equipment.